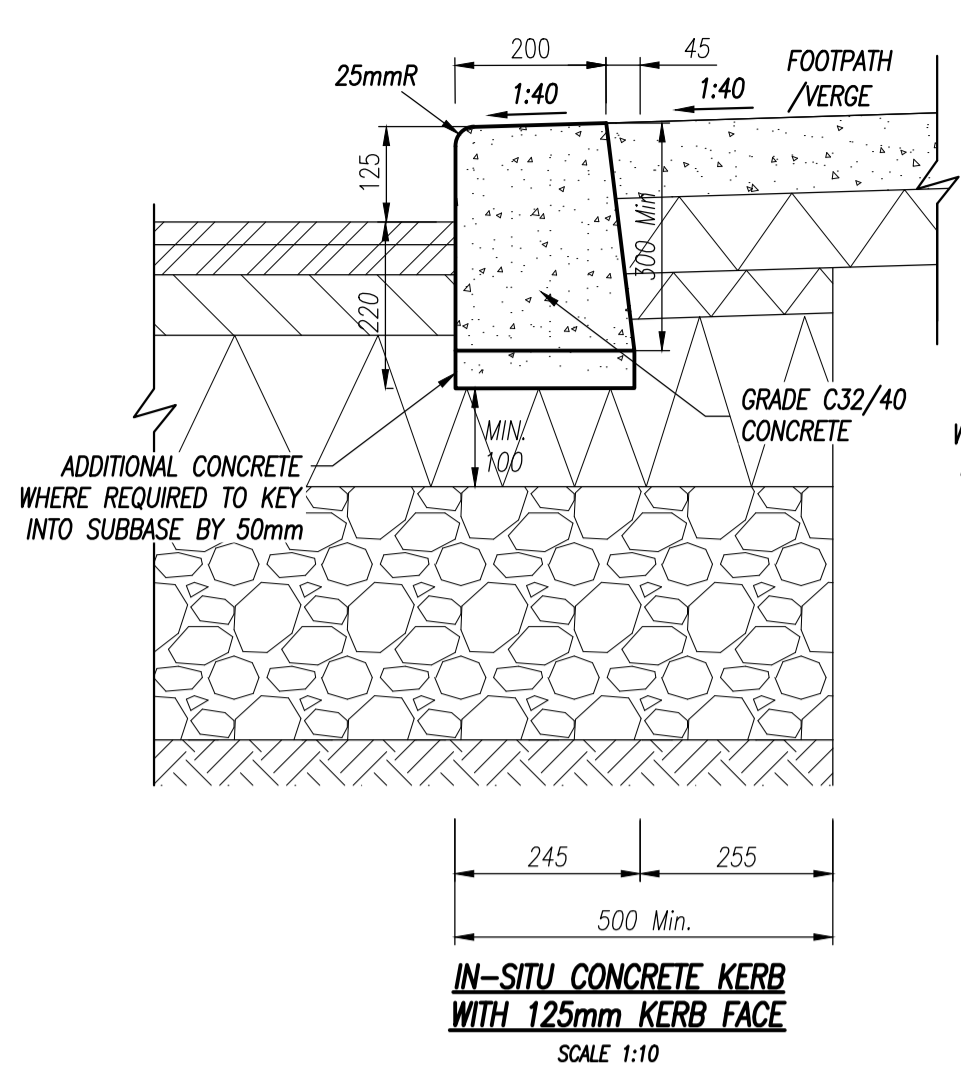
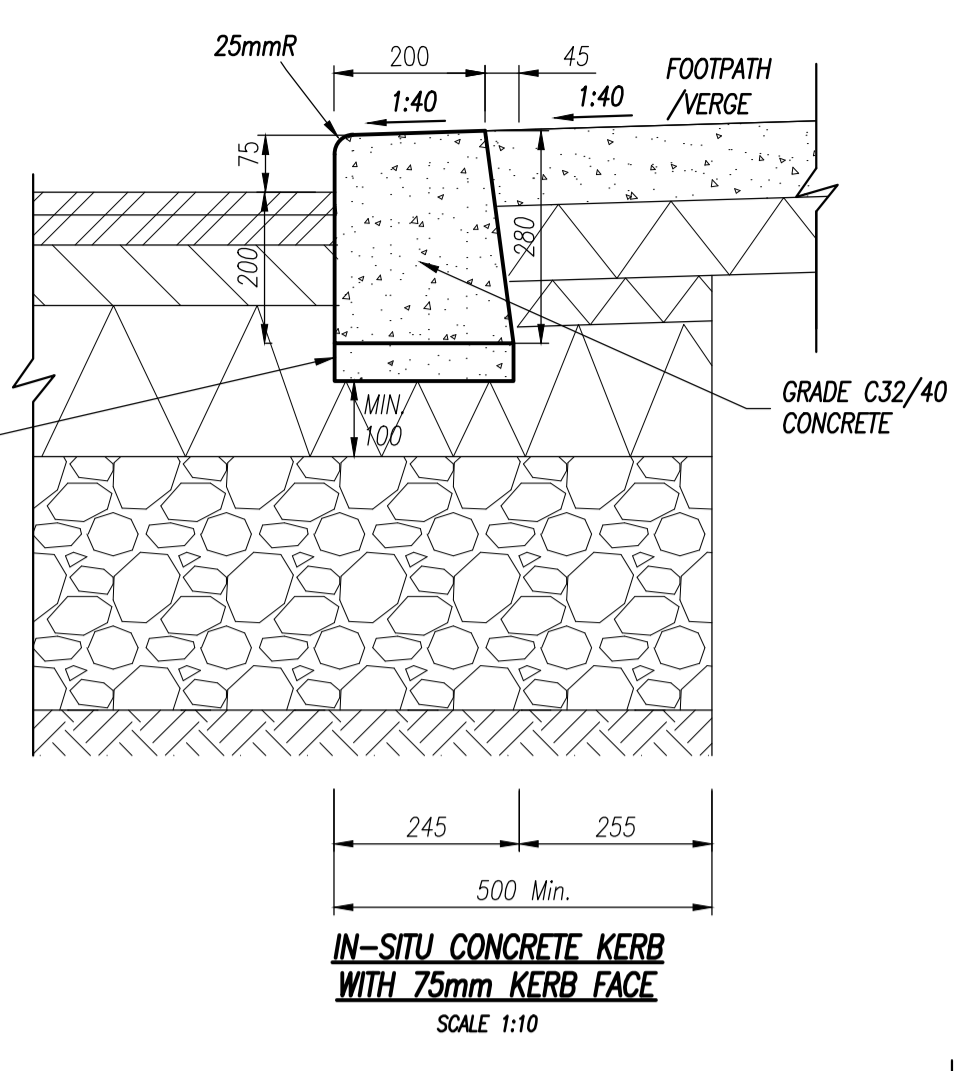


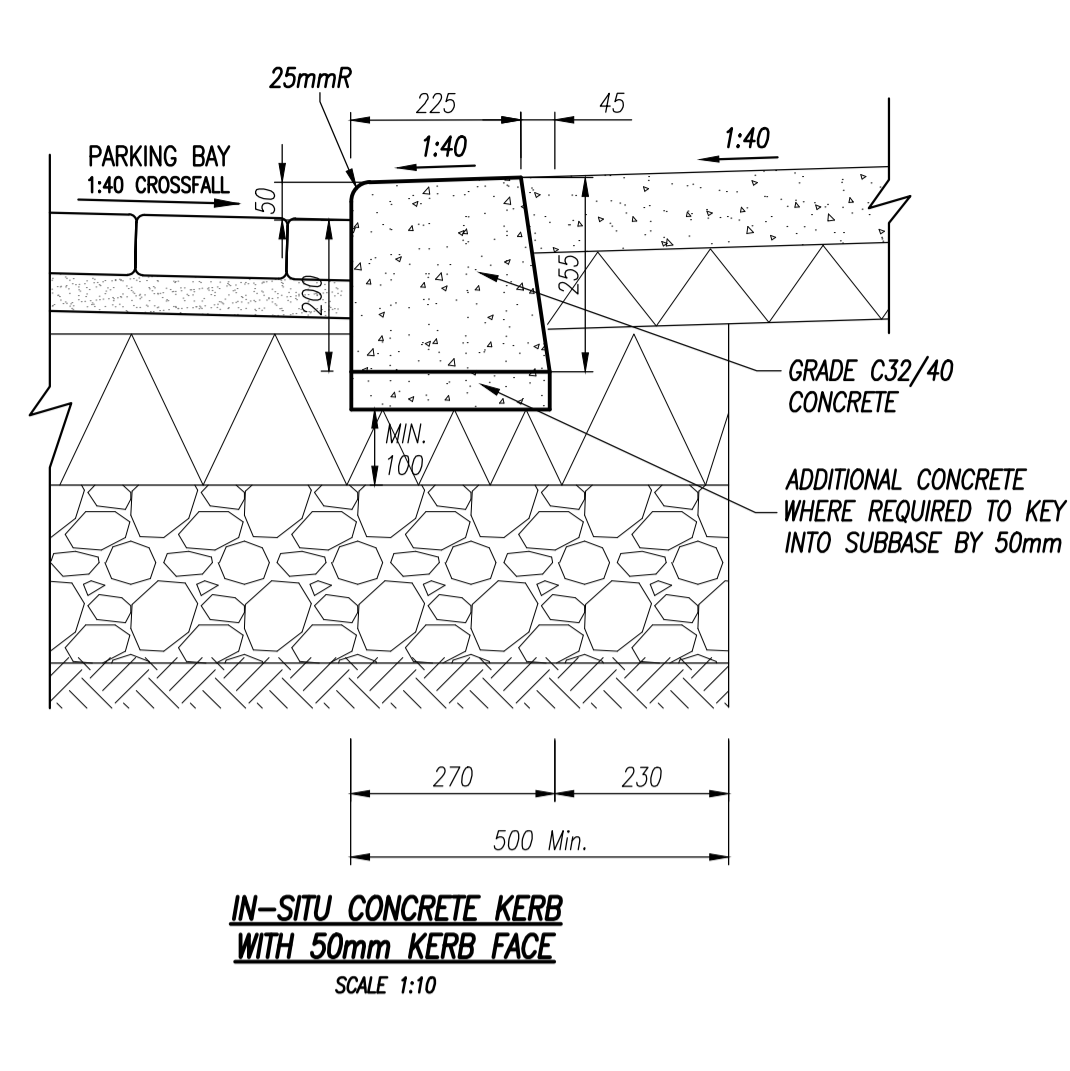
IN-SITU CONCRETE KERB WITH 150mm KERB FACE
SCALE 1:10



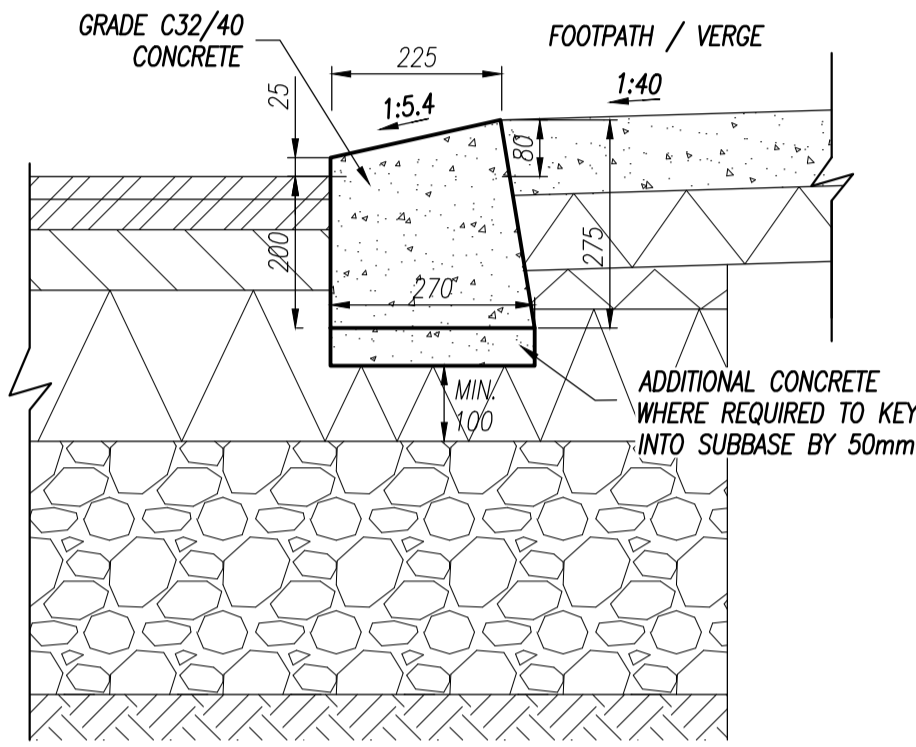
IN-SITU CONCRETE KERB WITH 125mm KERB FACE
SCALE 1:10



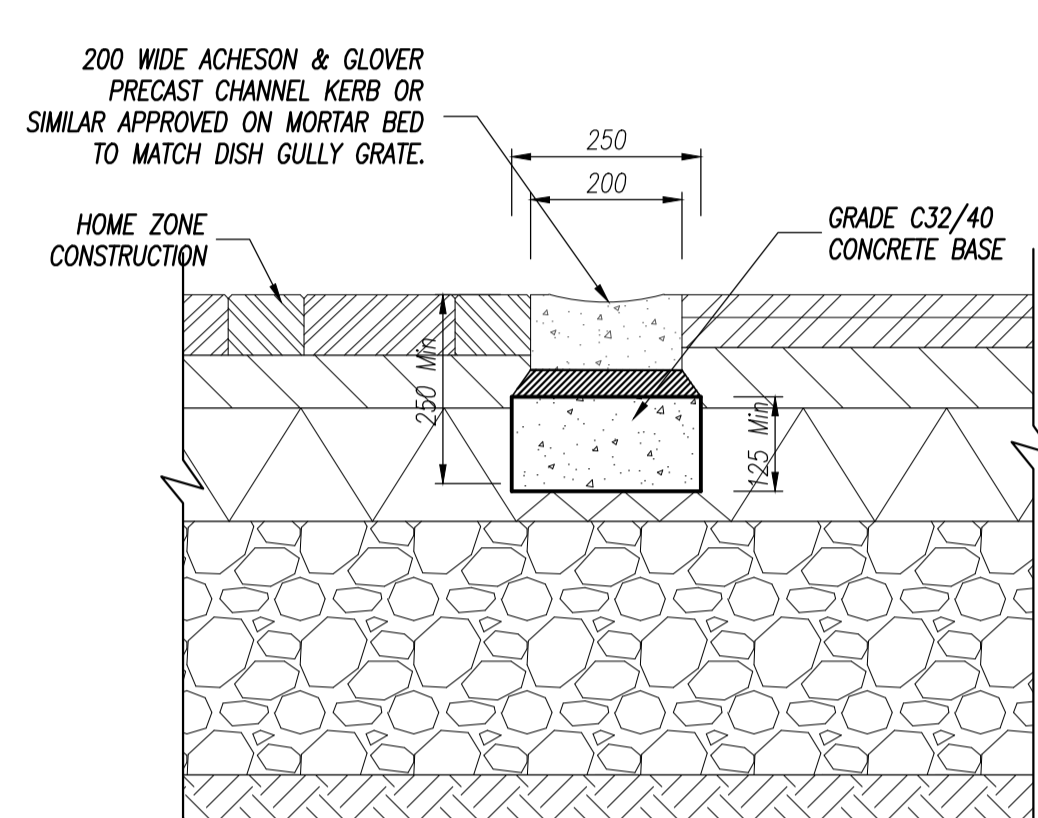
IN-SITU CONCRETE KERB WITH 75mm KERB FACE
SCALE 1:10



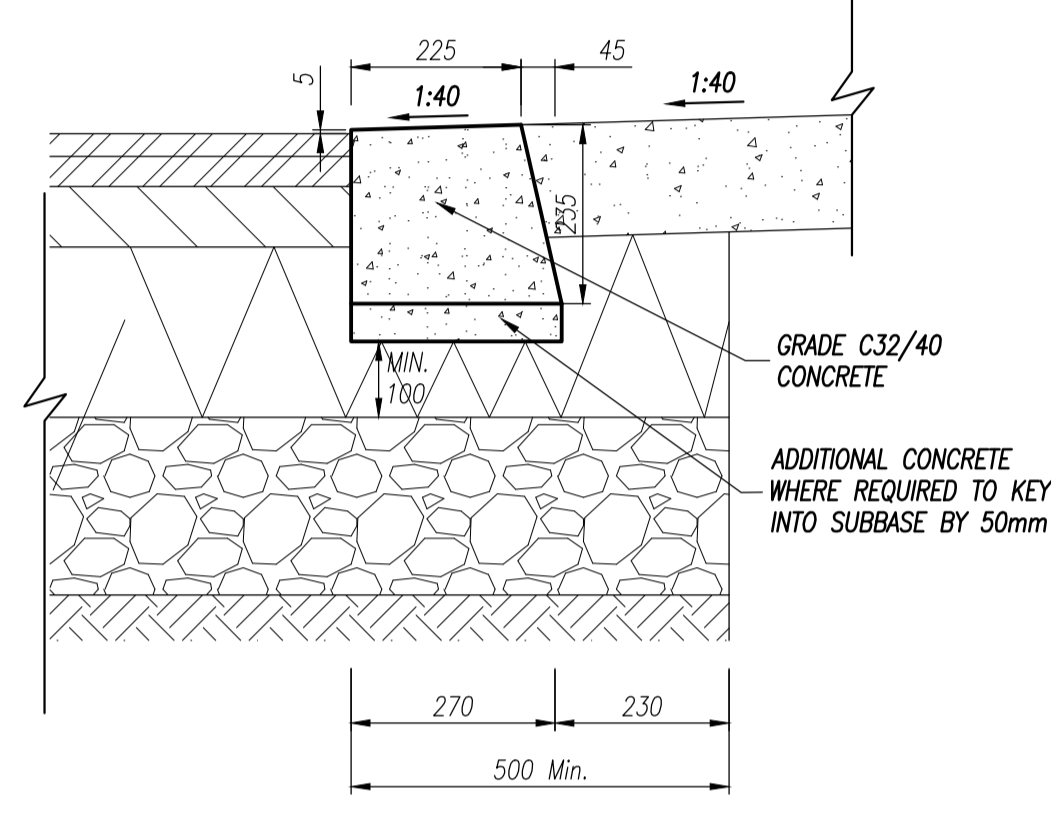
IN-SITU CONCRETE KERB WITH 50mm KERB FACE
SCALE 1:10



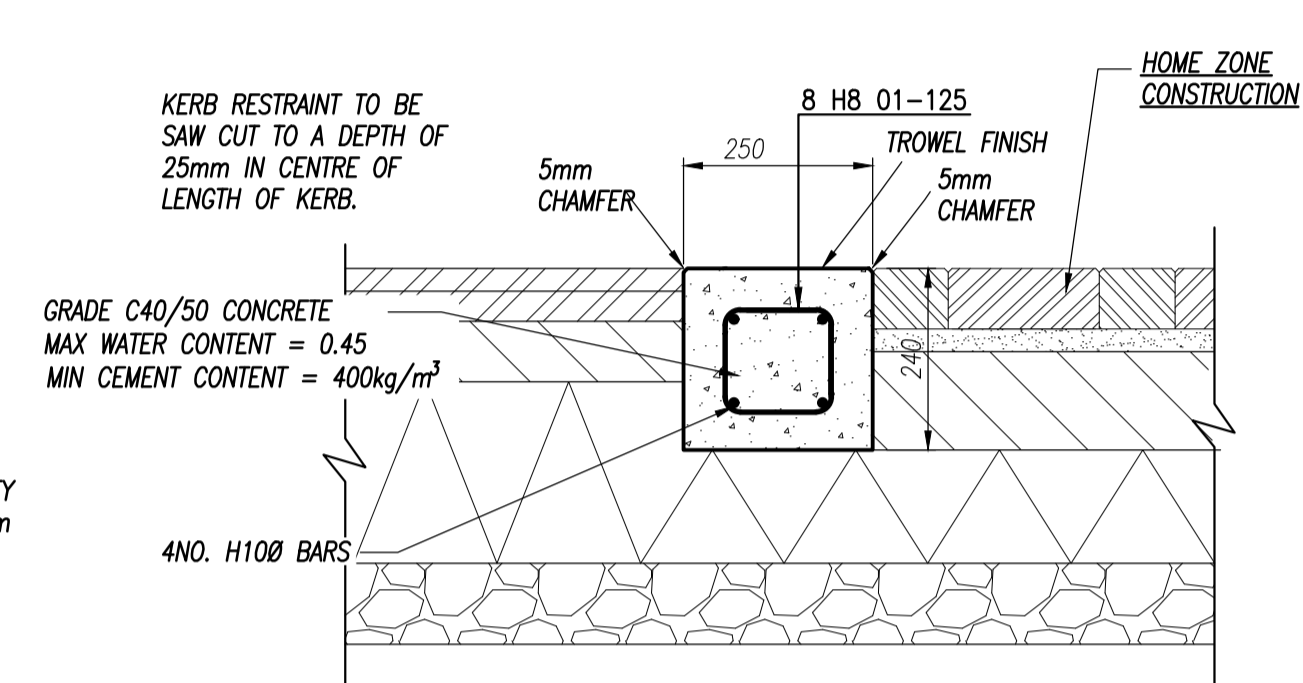
IN-SITU CONCRETE KERB 25mm KERB FACE DROPPED FROM 75mm KERB AT DRIVEWAY ACCESS
SCALE 1:10



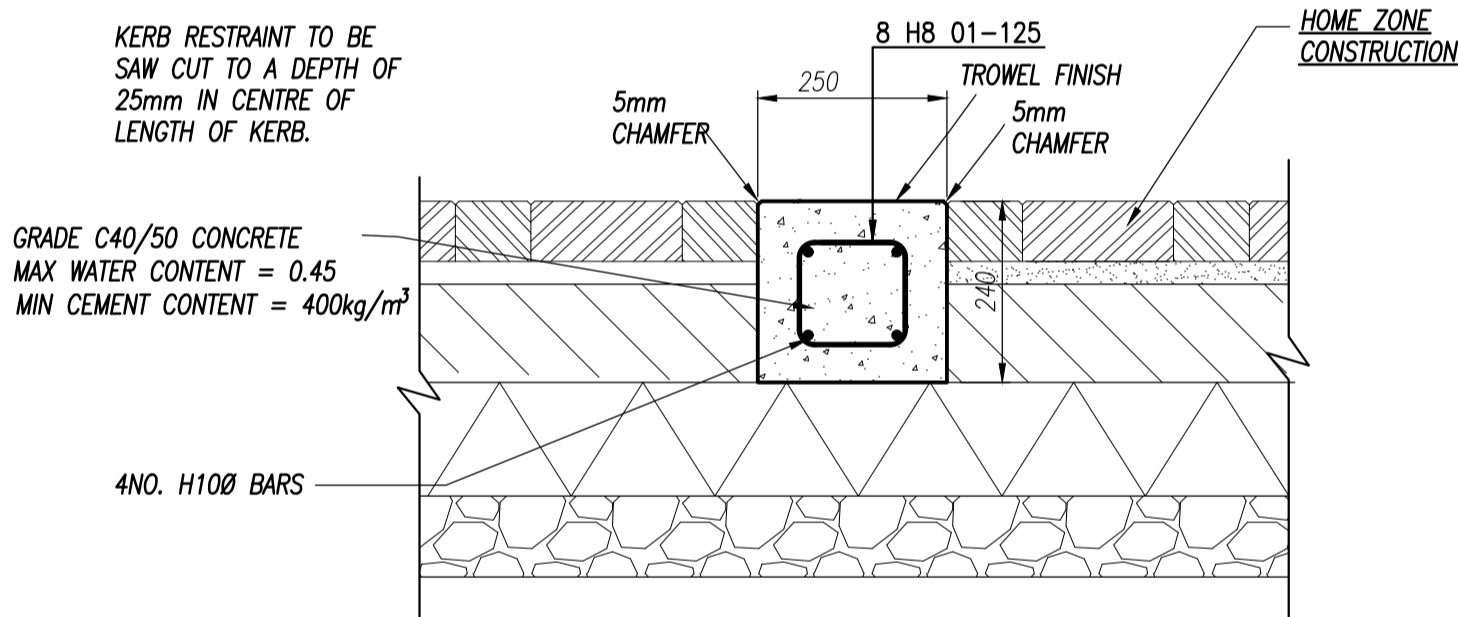
PRECAST CHANNEL DETAIL IN HOMEZONE
SCALE 1:10



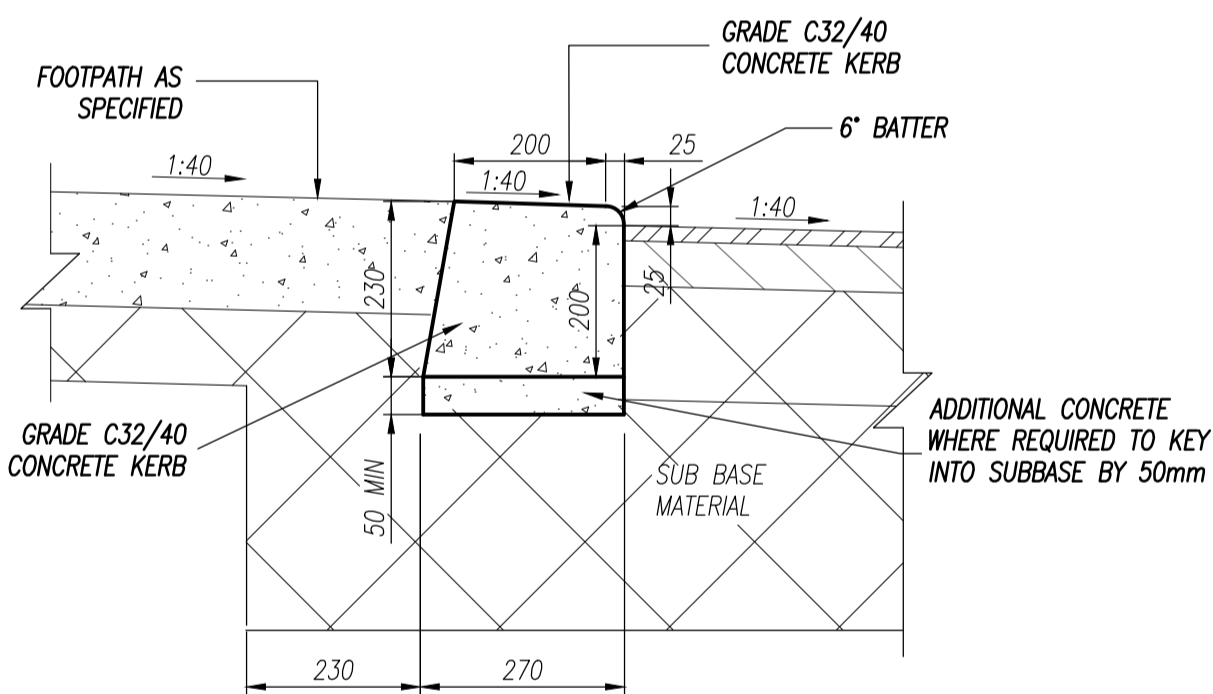
IN-SITU CONCRETE KERB WITH 5mm KERB FACE
SCALE 1:10



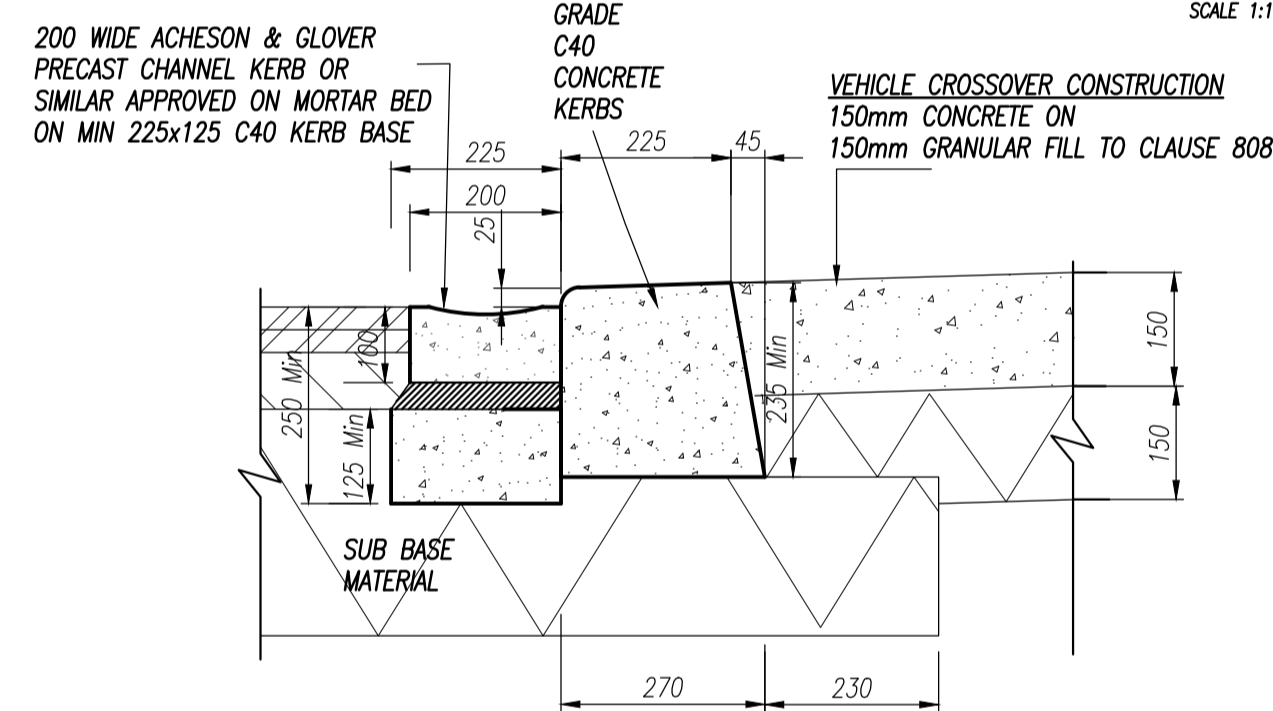
IN-SITU RESTRAINING DETAIL WITHIN HOMEZONE SET AT INTERFACE BETWEEN BLOCK & ASPHALT
SCALE 1:10



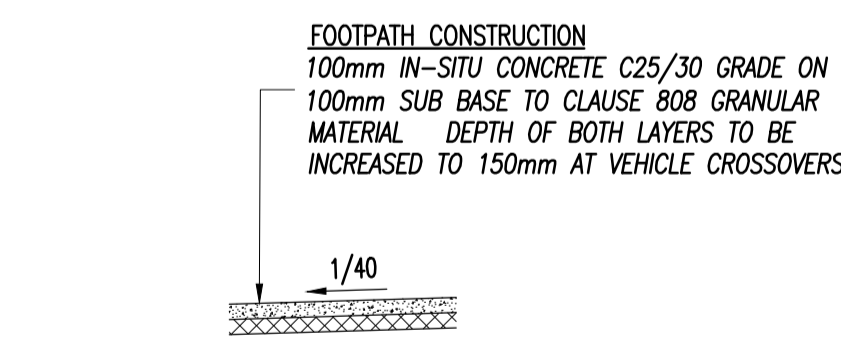
IN-SITU RESTRAINING DETAIL WITHIN HOMEZONE SET AT APPROX. 6.5m (Max. 7m) CENTRES LONGITUDINALLY
SCALE 1:10



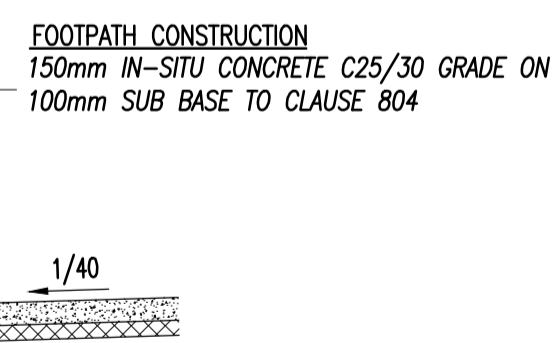
IN-SITU CONCRETE 25mm KERB
SCALE 1:10



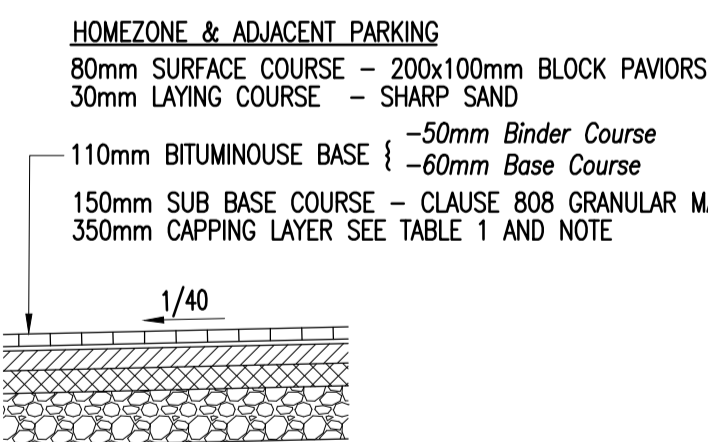
CAST IN-SITU KERB DETAIL 5 WITH 25mm KERB FACE AND PRECAST CHANNEL
SCALE 1:10



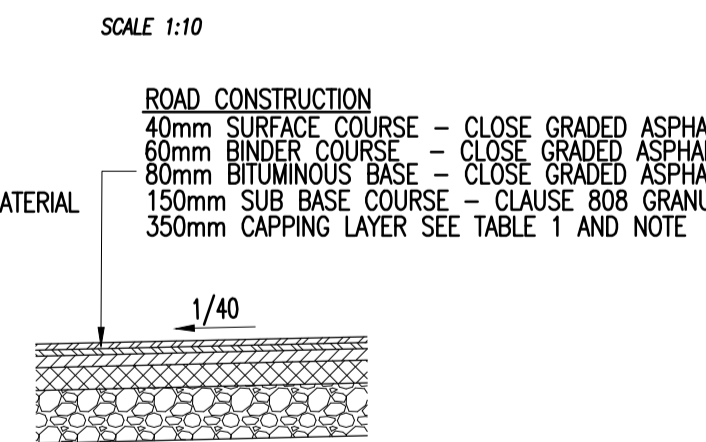
FOOTPATH CONSTRUCTION
SCALE 1:50



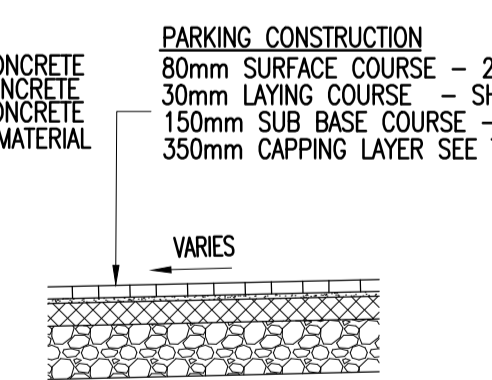
CONCRETE FOOTPATH CONSTRUCTION AT VEHICLE CROSSING
SCALE 1:50



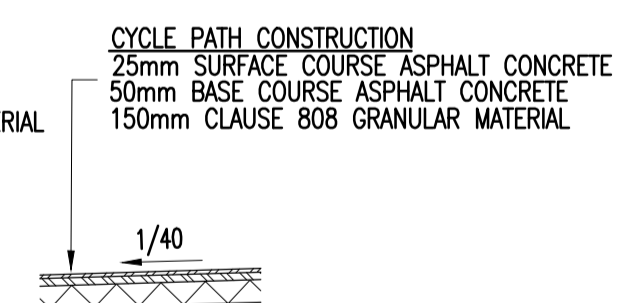
ROAD CONSTRUCTION - HOMEZONE/SHARED SURFACE ROADS AND PARKING BAYS FOR TAKING IN CHARGE
SCALE 1:50



ROAD CONSTRUCTION - SIDE STREET/BACK STREET ROADS
SCALE 1:50



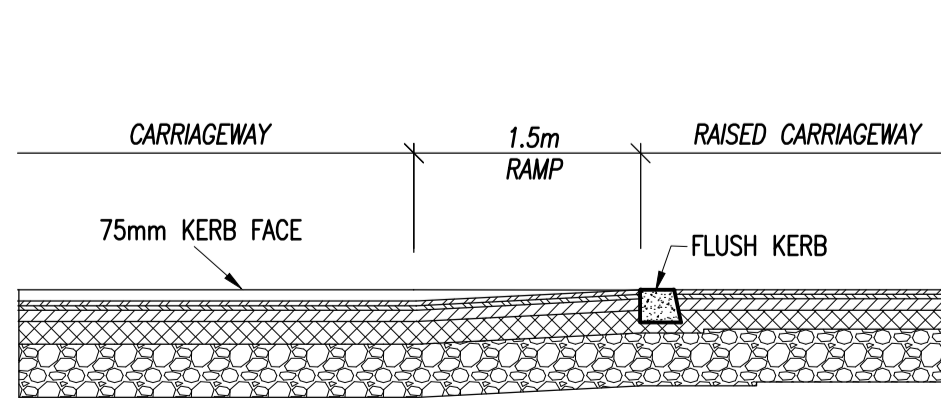
PRIVATE PARKING BAY / DRIVEWAY
SCALE 1:50



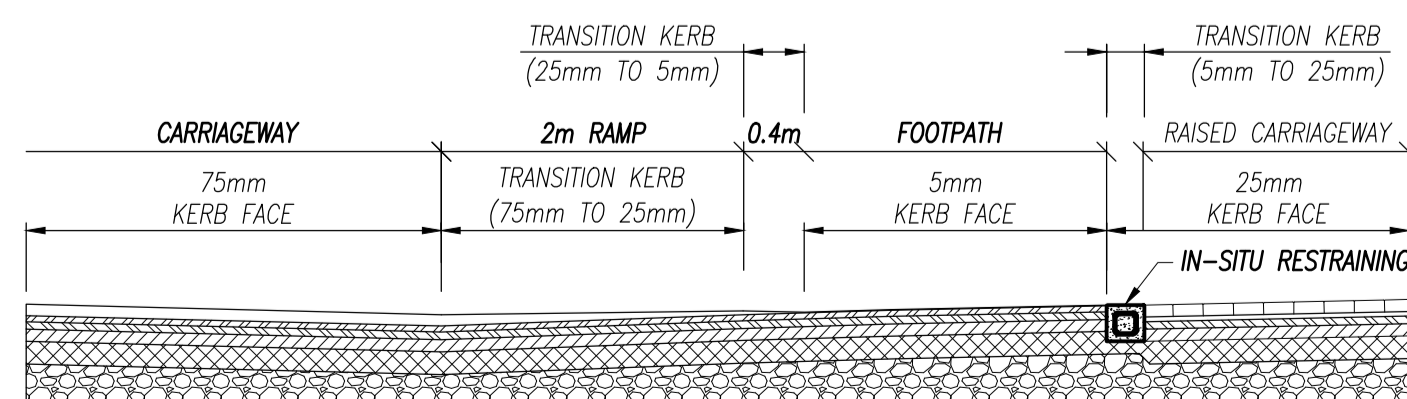
CYCLE WAY CONSTRUCTION
SCALE 1:50

C.B.R. SUB-GRADE (%)	BELOW 2	2	3	4 or More
THICKNESS OF SUB-BASE (mm)	625	475	350	300
SUB-BASE + CAPPING LAYER COMPRISING				
SUB-BASE THICKNESS (mm)	150	150		
CAPPING LAYER THICKNESS (mm)	600	350		

NOTE - CAPPING LAYER THICKNESS
PRELIMINARY TEST RESULTS CONFIRM CBR'S FROM 4.1 TO 8.2. ADDITIONAL TESTS TO BE CARRIED OUT BY THE CONTRACTOR TO BE TAKEN AT A RATE AGREED WITH THE ENGINEER BUT NOT LESS THAN 1 PER 50m. ALL C.B.R. RESULTS TO BE SUBMITTED TO THE ENGINEER PRIOR TO LAYING SUB-BASE FOR APPROVAL. ASSUMED CAPPING LAYER THICKNESS FOR TENDER 350mm.

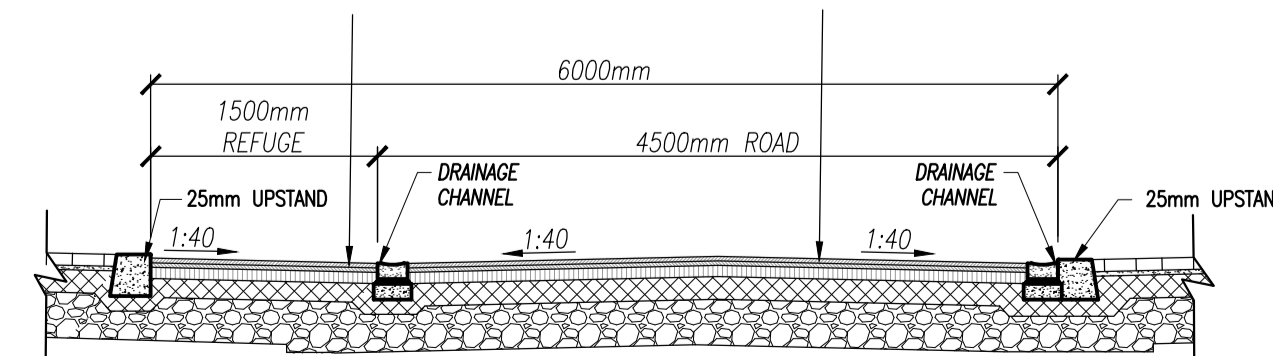


SECTION THROUGH RAMP INTO HOME ZONE / SHARED SURFACE ROADS xxx
SCALE 1:50



SECTION THROUGH RAMP INTO HOME ZONE / SHARED SURFACE
SCALE 1:50

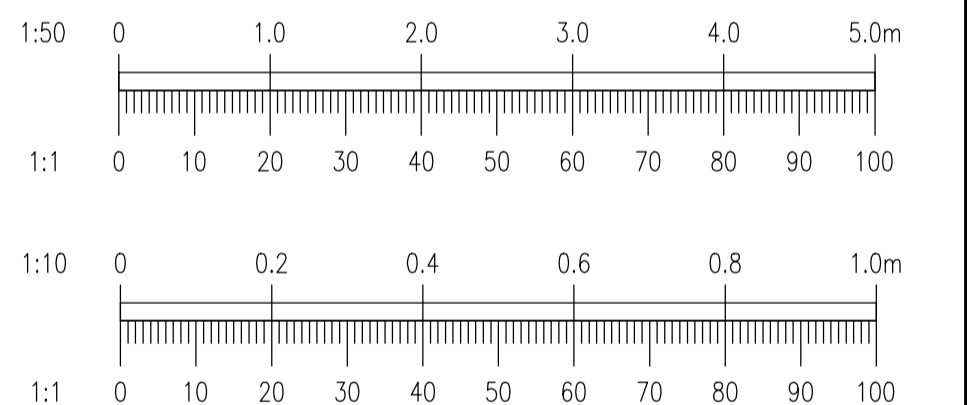
SHARED SURFACE CONSTRUCTION:
40mm WEARING COURSE, HOT ROLLED ASPHALT WITH 10mm RED PRE COATED COLOURED CHIPS AND A PIGMENT RATIO OF 5% ROLLED INTO SURFACE ON 30mm BASECOURSE - DENSE BITUMEN MACADAM ON 75mm ROADBASE - DENSE BITUMEN MACADAM MINIMUM 300mm SUB-BASE - CLAUSE 808 GRANULAR MATERIAL. NOTE: MATERIAL BELOW FORMATION LEVEL TO BE CLASS 8/2 SUPPLIED AND Laid IN ACCORDANCE WITH SERIES 600 IN THE NRA SPECIFICATION FOR ROAD WORKS.



HOMEZONE/SHARED SURFACE
SCALE 1:50

- NOTES:**
- DO NOT SCALE. USE FIGURED DIMENSIONS ONLY.
 - THIS DRAWING IS TO BE READ IN CONJUNCTION WITH ALL OTHER RELEVANT ARCHITECTURAL AND ENGINEERING DRAWINGS.
 - U3 CONCRETE FINISH INSITU.
 - CONCRETE KERBS SHALL COMPLY WITH THE RECOMMENDATIONS OF BS 5931 AND SHALL BE PROTECTED FROM ADVERSE WEATHER UNTIL CURED.
 - EXPANSION AND CONSTRUCTION JOINTS IN KERB TO MATCH JOINTS IN ROADS AND FOOTWAYS.
 - ALL ROAD WORKS TO BE TO SOUTH DUBLIN COUNTY COUNCIL STANDARDS FOR TAKING IN CHARGE.
 - IN SITU CONCRETE KERBS SHALL COMPLY WITH THE RECOMMENDATIONS OF BS 5931.
 - ALL ROADS WITHIN TAKING IN CHARGE AREA TO COMPLY WITH SDCC TIC POLICY - APPENDIX 6 - ROADS MINIMUM STANDARDS

30 September 2020
-- DRAFT --
Martin Kello



REV.	DATE	AMENDMENT	DRN	APPD
~	02/10/20	SHD APPLICATION	MK	IS

STATUS FOR SHD APPLICATION

Waterman Moylan
Engineering Consultants
BLOCK 8, EASTPOINT BUSINESS PARK, ALFIE BYRNE ROAD, DUBLIN D03 K7W7 IRELAND.
Tel: (01) 664 8900 Fax: (01) 661 3618
Email: info@waterman-moylan.ie www.waterman-moylan.ie

CLIENT	CASLETHORN CONSTRUCTION ULC		
ARCHITECT	O'MAHONY PIKE ARCHITECTS		
PROJECT	PROPOSED PHASE 2 RESIDENTIAL DEVELOPMENT AT DUNSHAUGHLIN, CO. MEATH		
TITLE	TYPICAL ROAD CONSTRUCTION DETAILS		
DRAWN MK	DESIGNED KV	APPROVED IS	DATE OCT. 2020
SCALE AS SHOWN	JOB NO. 18-081A	DRG. NO. P130	REVISION ~